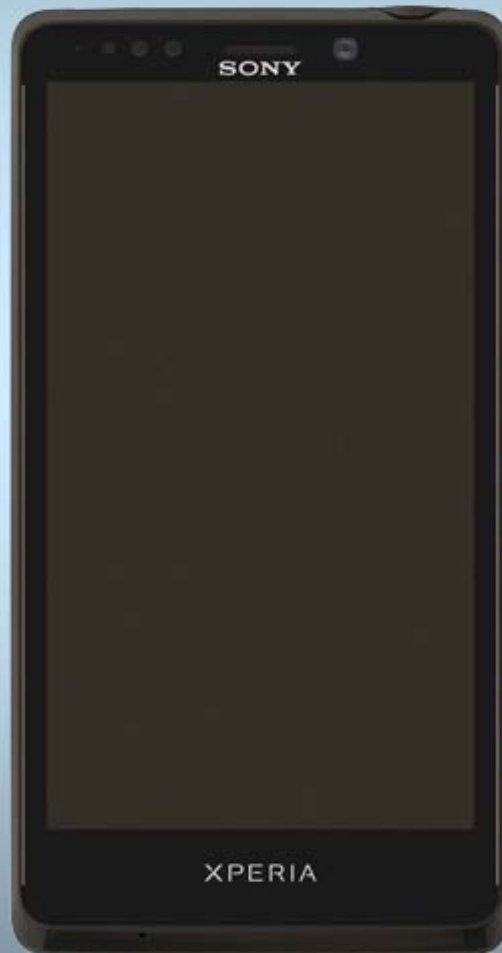


# Repair Movies

- mechanical -



**Xperia™ T**

**LT30p, LT30a & LT30at**

CONTENTS

1 Movies ..... 3

1.1 Disassembly ..... 3

1.2 Reassembly ..... 4

2 Revision History ..... 5

To view the embedded repair movies in this document, Acrobat Reader version 8 (or later) and Flash Player version 8 (or later) must be installed on your computer.

For best picture quality, select “Actual size” or “100%” as zoom level in Acrobat Reader. To magnify while keeping an acceptable picture quality, increase the zoom level to 200%.

If the movies appear to be jerky or blurred when viewing on-line, this is probably caused by the connection speed being too slow. In that case, right-click with the mouse on the document name and select Save Target As to download the repair movie document for off-line viewing.

For general information about repair movies, refer to 1220-1333: Generic Repair Manual - mechanical



## 1 Movies

### 1.1 Disassembly

#### LT30p

The Disassembly is done in the following order:

1. Cover Back Assembly
2. Carrier Lower Frame Assembly
3. Carrier Upper Frame Assembly
4. Main PBA
5. PBA SideKey FPC
6. Front Cover



#### LT30a & LT30at

The Disassembly is done in the following order:

1. Cover Back Assembly
2. Carrier Lower Frame Assembly
3. Carrier Upper Frame Assembly
4. PBA Complete
5. PBA SideKey FPC
6. Front Cover
7. Cap Lower Cap Assembly
8. Cap Upper Cap Assembly



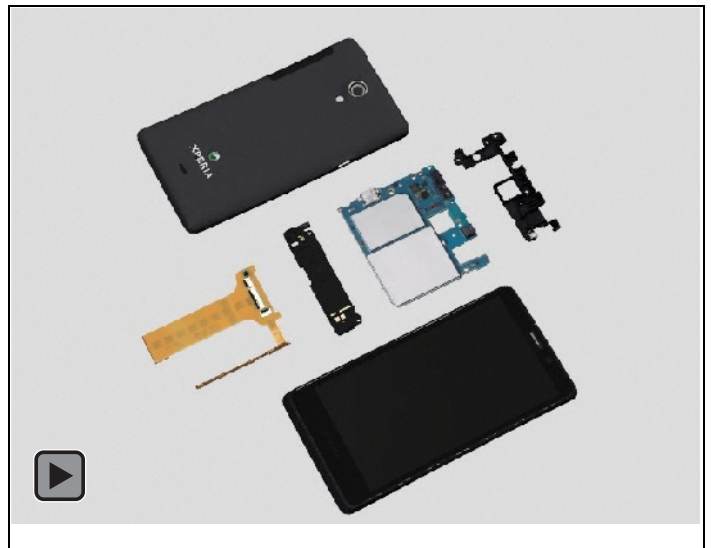
## Movies

### 1.2 Reassembly

#### LT30p

The Reassembly is done in the following order:

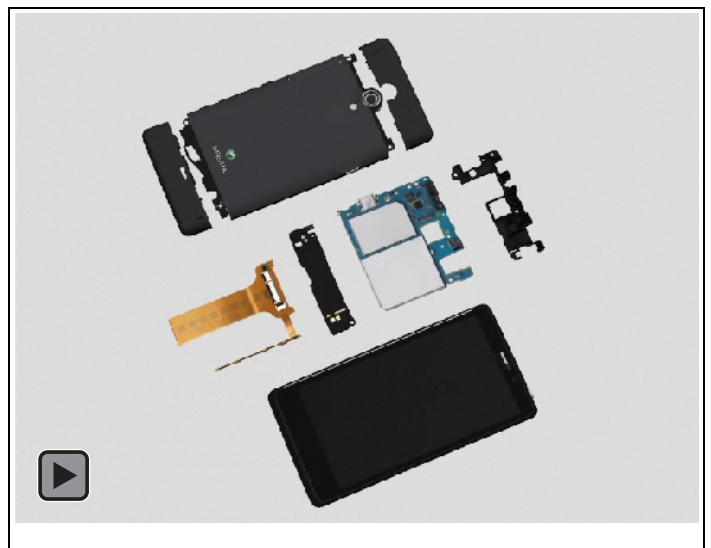
1. Front Cover
2. PBA SideKey FPC
3. Main PBA
4. Carrier Upper Frame Assembly
5. Carrier Lower Frame Assembly
6. Cover Back Assembly



#### LT30a & LT30at

The Reassembly is done in the following modules:

1. Front Cover
2. PBA SideKey FPC
3. PBA Complete
4. Carrier Upper Frame Assembly
5. Carrier Lower Frame Assembly
6. Cover Back Assembly
7. Cap Lower Cap Assembly
8. Cap Upper Cap Assembly



## 2 Revision History

Rev.	Date	Changes / Comments
1	2012-Sep-14	Initial release
2	2012-Oct-31	LT30a & LT30at added